





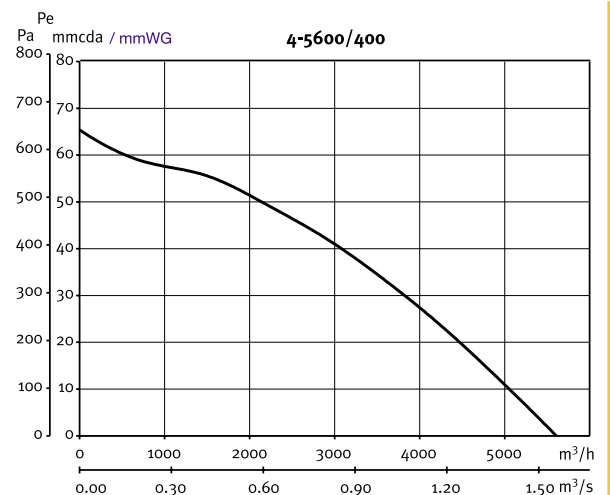
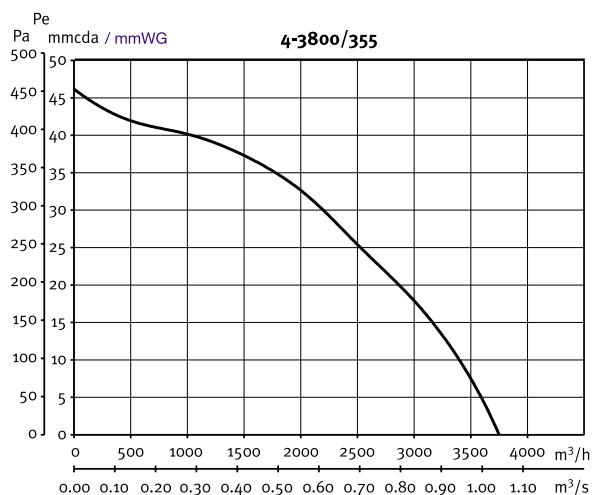
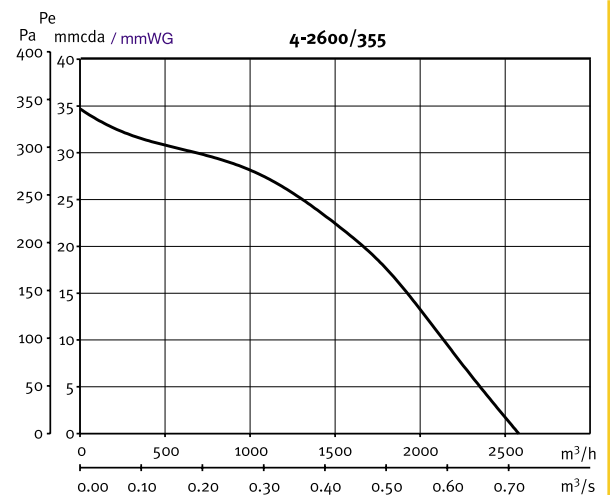
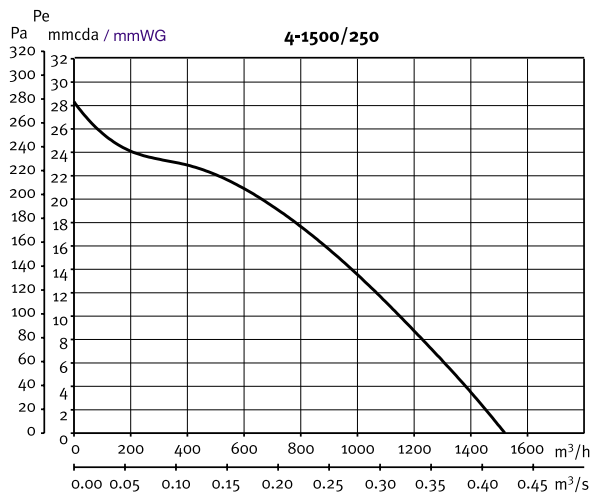
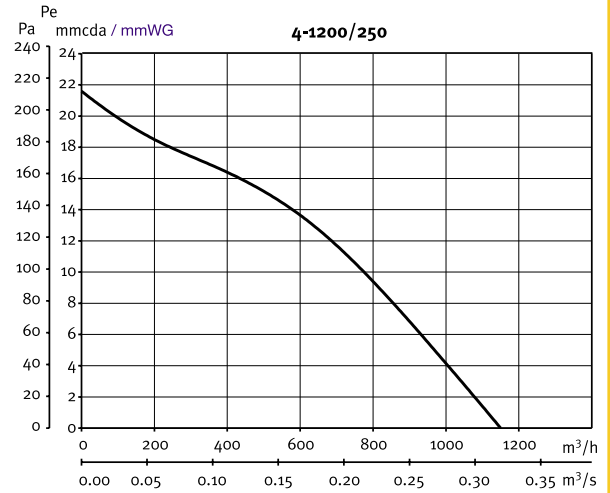
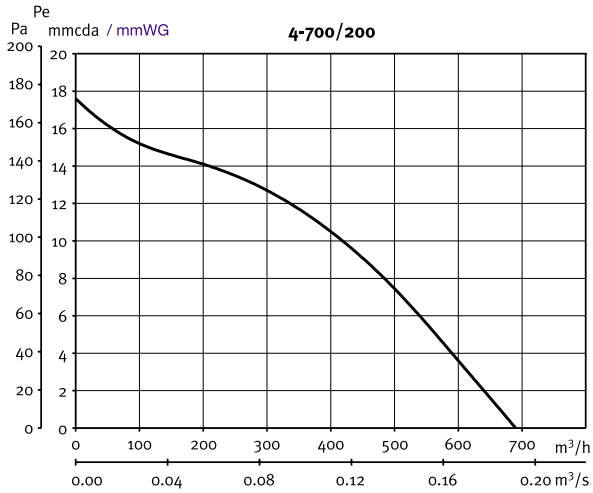


## CURVAS CARACTERISTICAS

- Q = Caudal en m<sup>3</sup>/h y m<sup>3</sup>/s.
- Pe = Presión estática en mm.c.d.a y Pa.
- Aire seco normal a 20 °C y 760 mm c.d. Hg.
- Ensayos realizados de acuerdo a Normas UNE 100-212-89 BS 848, Part 1; AMCA 210-85 y ASHRAE 51-1985.

## PERFORMANCE CHARACTERISTICS

- Q = Air Volume in, m<sup>3</sup>/hr and m<sup>3</sup>/s.
- Pe = Static Pressure in Pa. and mmWG.
- Air Density at 20 °C and 760 mmHg.
- Air flow data in accordance with the following standards: BS 848, Part 1&2; UNE 100-212-89, AMCA 210-85 and ASHRAE 51-1985.





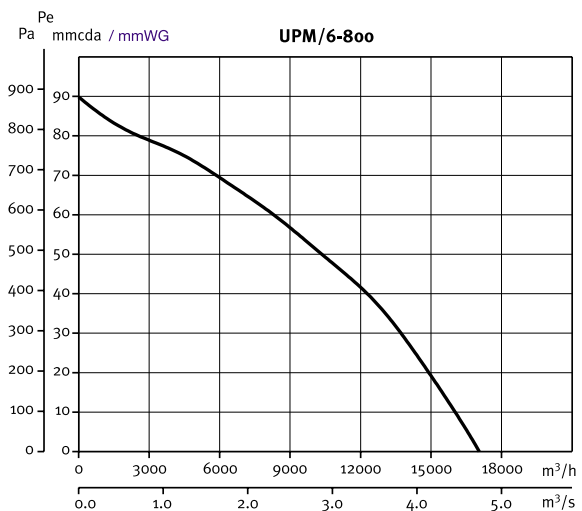
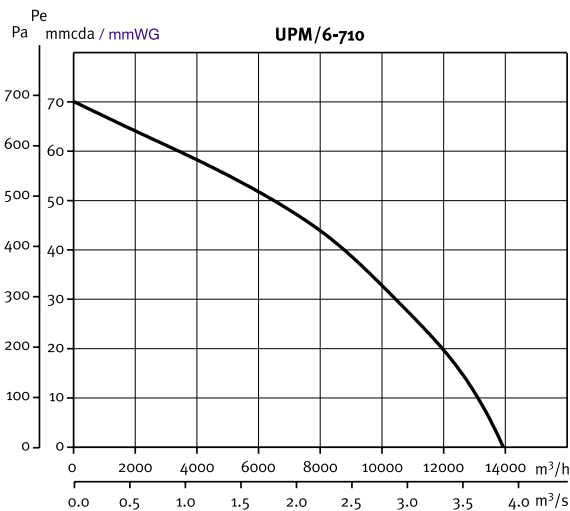
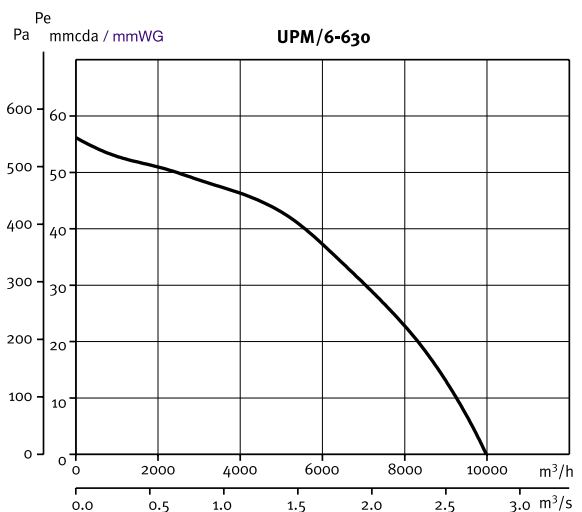
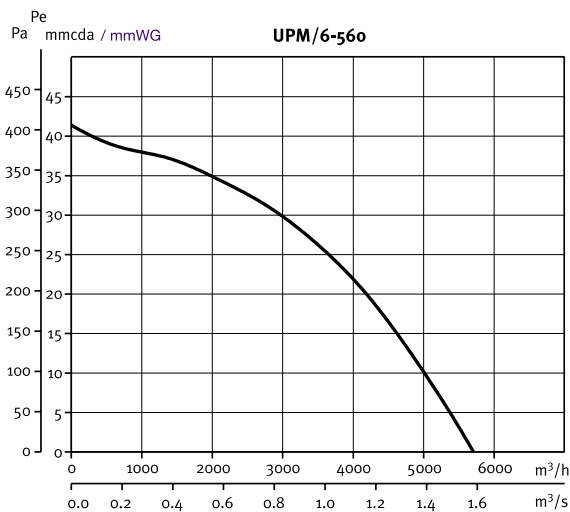
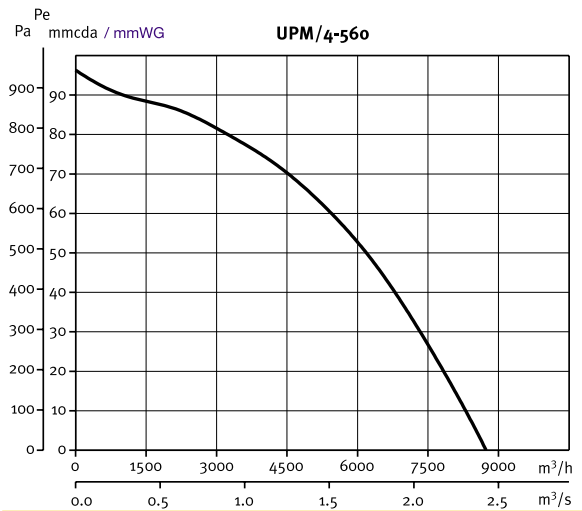
## CURVAS CARACTERISTICAS

- Q = Caudal en m<sup>3</sup>/h y m<sup>3</sup>/s.
- Pe = Presión estática en mm.c.d.a y Pa.
- Aire seco normal a 20 °C y 760 mm c.d. Hg.
- Ensayos realizados de acuerdo a Normas UNE 100-212-89 BS 848, Part 1; AMCA 210-85 y ASHRAE 51-1985.

## PERFORMANCE CHARACTERISTICS

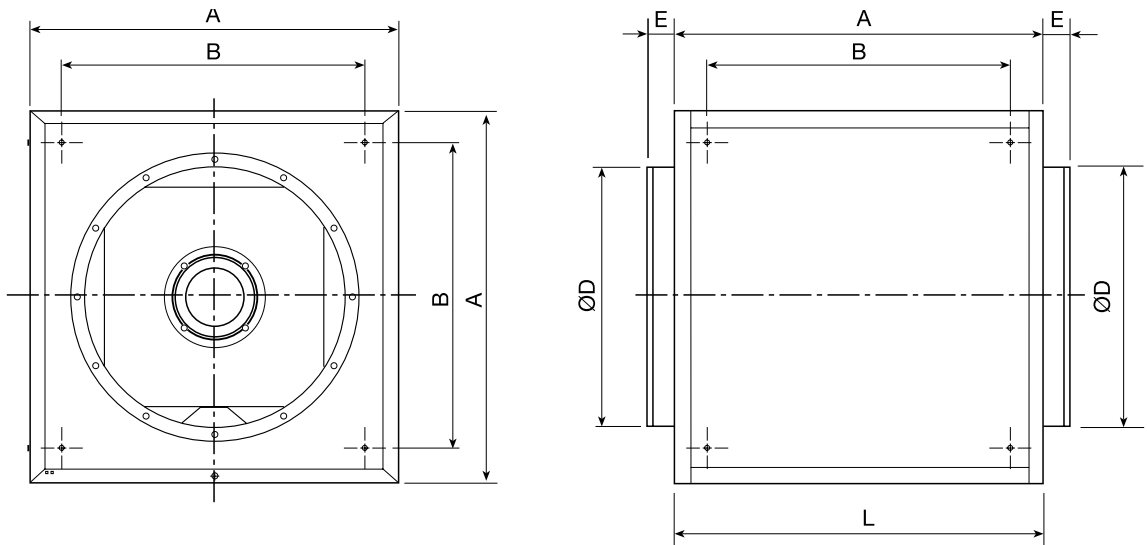
- Q = Air Volume in, m<sup>3</sup>/hr and m<sup>3</sup>/s.
- Pe = Static Pressure in Pa. and mmWG.
- Air Density at 20 °C and 760 mmHg.
- Air flow data in accordance with the following standards: BS 848, Part 1&2; UNE 100-212-89, AMCA 210-85 and ASHRAE 51-1985.

# UPM

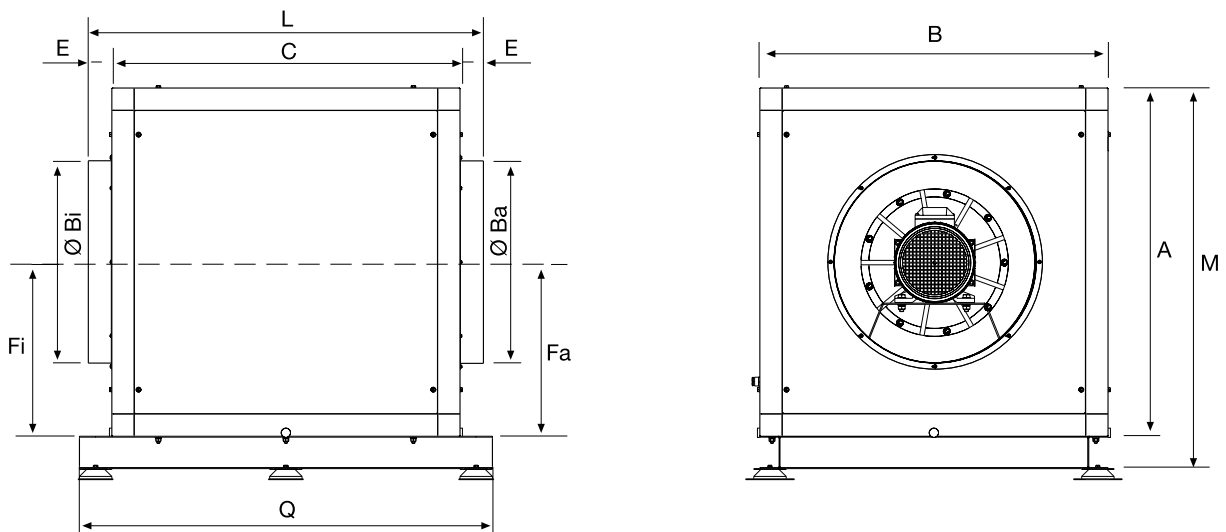




**DIMENSIONES (mm) / DIMENSIONS (mm)**



Tipo / Model Type	A	B	C	Ø D	E
UPM/4-700/200	400	270	530	200	65
UPM/4-1200/250	450	320	580	250	65
UPM/4-1500/250	500	370	630	250	65
UPM/4-2600/355	550	390	680	355	65
UPM/4-3800/355	650	490	780	355	65
UPM/4-5600/400	800	640	930	400	65



Tipo / Model Type	A	B	C	E	L	M	Q	Ø Bi	Ø Ba	Fi	Fa
<b>560</b>	860	860	860	55	970	940	1020	500	500	430	430
<b>630</b>	920	920	920	55	1030	1000	1080	630	630	460	460
<b>710</b>	980	980	980	55	1090	1060	1140	630	630	490	490
<b>800</b>	1037	1037	1037	55	1147	1117	1197	710	710	518,5	518,5